

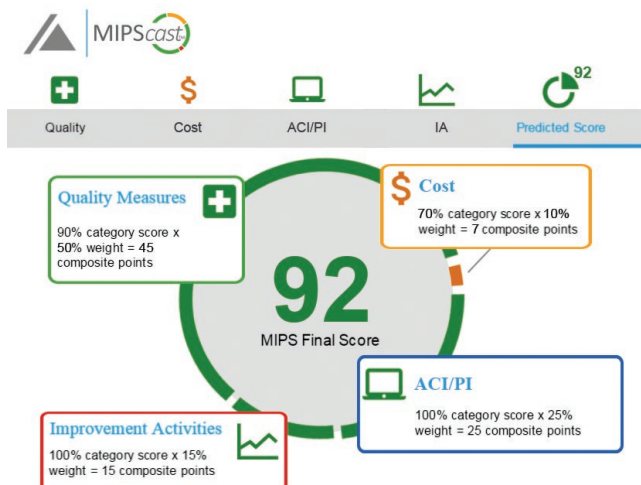
Free Assistance from the QPP Resource Center® for the Midwest

The Quality Payment Program is the new Medicare initiative focused on measuring quality and improving healthcare delivery. If you provide Medicare Part B services, the question is not if you will participate in the Quality Payment Program, but how. Your practice will choose one of two tracks: the Merit-based Incentive Payment System (MIPS) or an Advanced Alternative Payment Model (APM).

Unsure of what to do? That's where we come in! We are the Quality Payment Program Resource Center® for the Midwest, a Centers for Medicare and Medicaid Services-funded collaboration among 10 key partners across Michigan, Ohio, Indiana, Illinois, Kentucky, Wisconsin, and Minnesota, focused on supporting providers in small practices, and rural or underserved areas. Our Resource Center® provides free help to eligible clinicians as they navigate participation in the Quality Payment Program.

The Resource Center® web portal can be your trusted source for the education and resources you need to be successful under this new Medicare payment program. Our expert staff review all portal resources for accuracy and usability. Our straightforward, self-directed resources and tools can help you to assess your current state of MIPS readiness, or the potential impact of belonging to an APM. An easy-to-use, interactive web-app, MIPScast™, will help you predict your MIPS score, identify areas for improvement, and compare your practice to peers.

Expert Quality Payment Program Advisors are also available via live chat or phone support during regular business hours to help you identify and effectively use the tools and resources available through the Resource Center® web portal: qppresourcecenter.org.



Contact Us

Go to qppresourcecenter.org today! If you have not already signed up, simply click the **Join Now** button. You may email us questions any time: QPPinfo@altarum.org

Not sure if your practice is Small/Rural/Underserved?

Even if we can't assist you, we will work to connect you with another source of support based on your practice type and needs. We can refer you directly to:

- Quality Improvement Organizations (QIOs)
- Practice Transformation Networks (PTNs)
- Regional Extension Centers (RECs)
- One of the other 10 Quality Payment Program Contractors (outside our 7-state region)